

UNIT B

2 BEDROOM, 2 BATH

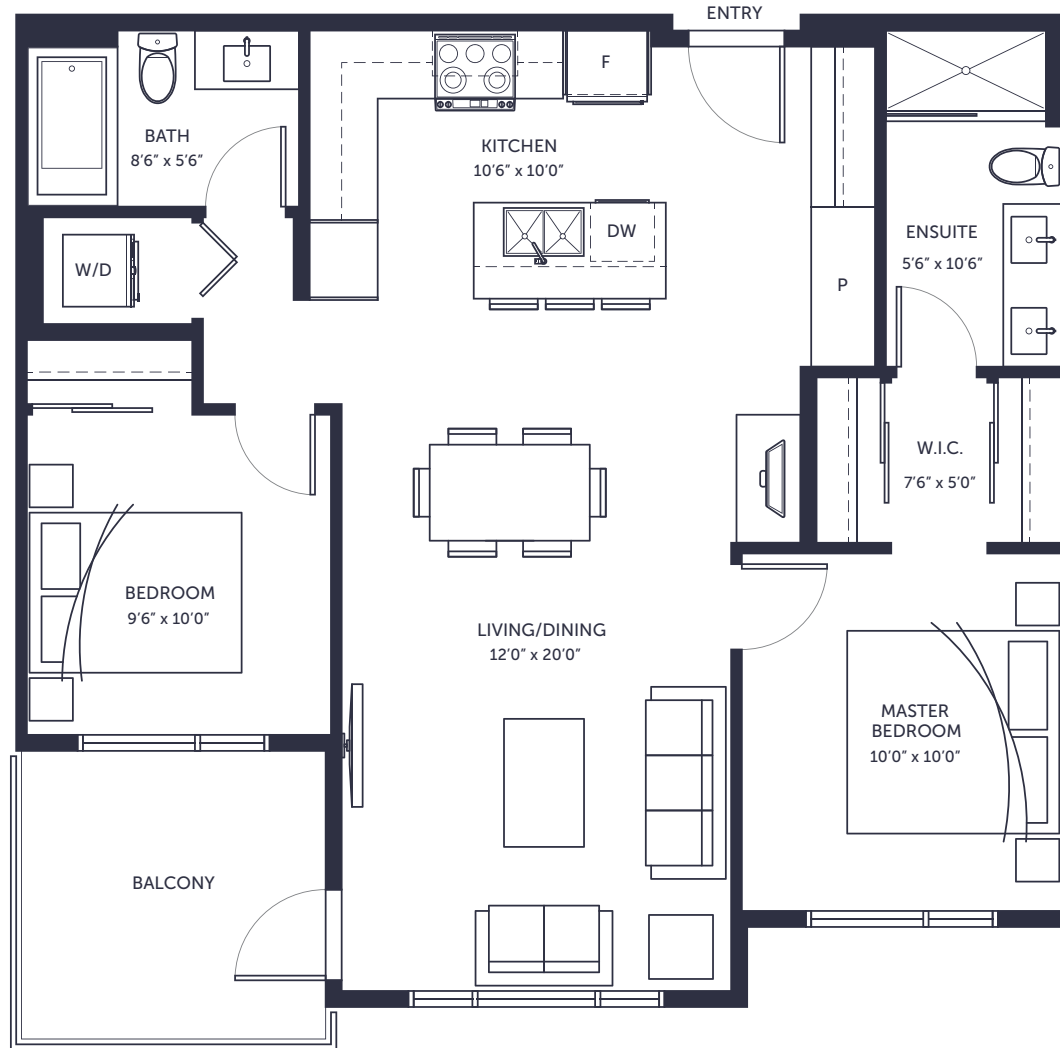
Interior Area: 910 sq.ft.

Unit Balcony Area:

Unit 203	113 sq.ft.
Unit 211	117 sq.ft.
Unit 213	113 sq.ft.
Unit 303	113 sq.ft.
Unit 311	117 sq.ft.
Unit 313	113 sq.ft.
Unit 403	89 sq.ft.
Unit 411	89 sq.ft.
Unit 413	89 sq.ft.
Unit 503	89 sq.ft.
Unit 511	89 sq.ft.
Unit 513	89 sq.ft.

LEDCOR PROPERTY INVESTMENTS

In our continuing effort to improve and maintain the high standard of the Belmont Residences East development, the developer reserves the right to modify or change plans, specifications, features and prices without notice. Materials and equipment (including appliances) may be substituted with equivalent or better at the developer's sole discretion. All dimensions and sizes are approximate and are based on preliminary architectural measurements. As reverse, flipped and/or mirrored plans occur throughout the development please see architectural plans if this is material to your decision to purchase. Renderings and images provided are an artist's conception and are intended only as a general reference and are not to be relied upon. Please see disclosure statement for specific offering details. E&O.E. Sales and Marketing provided by Fifth Avenue Real Estate Marketing Ltd. www.fifthave.ca and DFH Real Estate Ltd. www.dfh.ca



Main Level